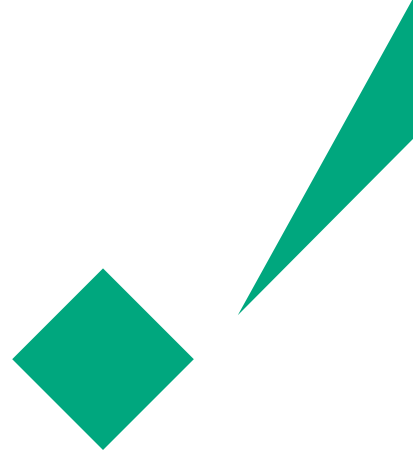


See your future in our Direct Write Exposure Solution

Direct Write Exposure Systems



Ushio's DE-2 and DE-8





DE-2

2µm L/S Direct Write Exposure System

DE-2 W300 for 300mm (12") Wafer

DE-2 P600 for 600 × 600mm Panel December 2021 Debut

- ◆ Maskless Direct Imaging for Fan-Out WLP & PLP and High Precision Packaging
- ◆ Minimum Line/Space = 2/2µm imaging capability
- ◆ Overlay accuracy ≤ 1µm
- ◆ Optional Deca's Adaptive Patterning™ connectivity



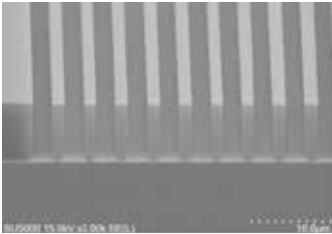
DE-8

Direct Write Exposure System for FO-WLP/PLP

DE-8 W300 for 300mm (12") Wafer

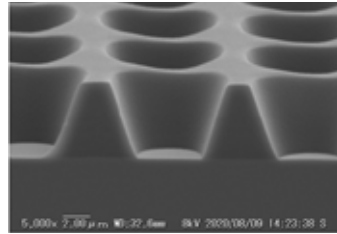
DE-8 P600 for 600 × 600mm Panel

- ◆ Maskless Direct Imaging for FAN-OUT WLP & PLP
- ◆ Minimum Line/Space = 8/8µm imaging capability
- ◆ Overlay accuracy ≤ 7µm
- ◆ Optional Deca's Adaptive Patterning™ connectivity



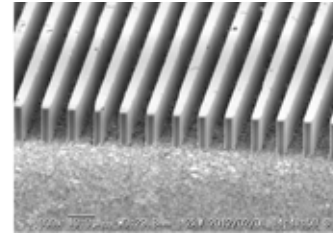
L/S 2/2µm

Liquid Photo-sensitive Resist
7µm thick



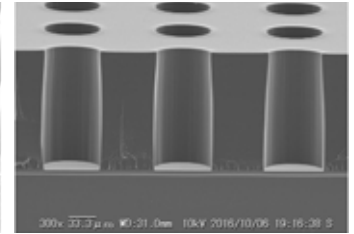
Via opening 5µm dia. 10µm Pitch

Liquid Photo-sensitive Polyimide
7µm thick



L/S 5/5µm

Dry Film Resist
15µm thick



Opening 70µm dia. 140µm Pitch

Dry Film Resist
160µm thick

Adaptive Patterning™

by DECA

As a product moves through the manufacturing process, Adaptive Patterning™ (AP) customizes each lithographic layer on a device-by-device basis to ensure the highest possible yield.

1. DESIGN

Create nominal design with instructions for AP (one-time for each new product)

STUDIO

2. ADAPT

Execute real-time design optimization during manufacturing for each device on every panel

ENGINE

3. EXPOSE

Implement optimized design with LDI on each device on every panel

CONNECT



USHIO EUROPE B.V. - Headquarters
The Netherlands | +31 20 446 9333
sales@ushio.eu | www.ushio.eu

USHIO U.K., LTD.
United Kingdom | +44 129 625 6067
sales@ushio.eu | www.ushio.eu



USHIO GERMANY GmbH
Germany | +49 8094 906 0
sales@ushio.de | www.ushio.de

USHIO FRANCE S.A.R.L.
France | +33 134 64 94 94
sales@ushio.eu | www.ushio.eu